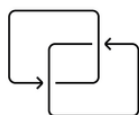




KIK MOVE



Two-way
protocol

Radio control

KIK MOVE

The KIK Move is a motion sensor for awnings with radio communication, compatible with the entire range of Eurotronic motors. It guarantees the automatic closing of the connected devices in case of strong wind, prioritising safety and comfort. With a high degree of watertightness, this sensor is completely autonomous and wireless, eliminating the need for cables. It offers sensitivity adjustment with up to 9 levels and has a battery life of up to 2 years.

Reference



KIK MOVE | BD.001.125

Compatible with the entire range of radio motors

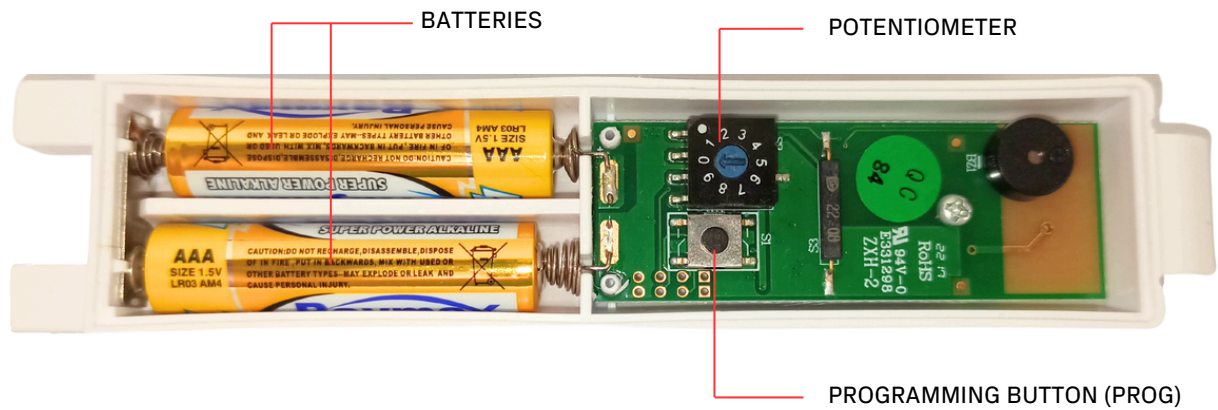
Radio frequency 433.92 Mhz

9 sensitivity levels

TECHNICAL CHARACTERISTICS

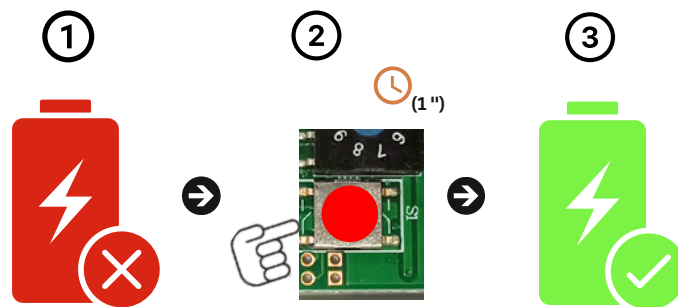
Name	Sensitivity levels	Battery Type	Frequency	Temperature	Measures
KIK MOVE	9	x2 AAA	433.92 Mhz	-10 a 50° C	63 x 35 x 13 mm

INTERNAL DISTRIBUTION



INSTRUCTIONS:

1. BIDIRECTIONAL OR UNIDIRECTIONAL MODE SELECTION



Procedure:

1. Remove the battery and make sure it is properly disconnected.
2. Press and hold the programming button (PROG) for one second (1").
3. Reconnect the battery.

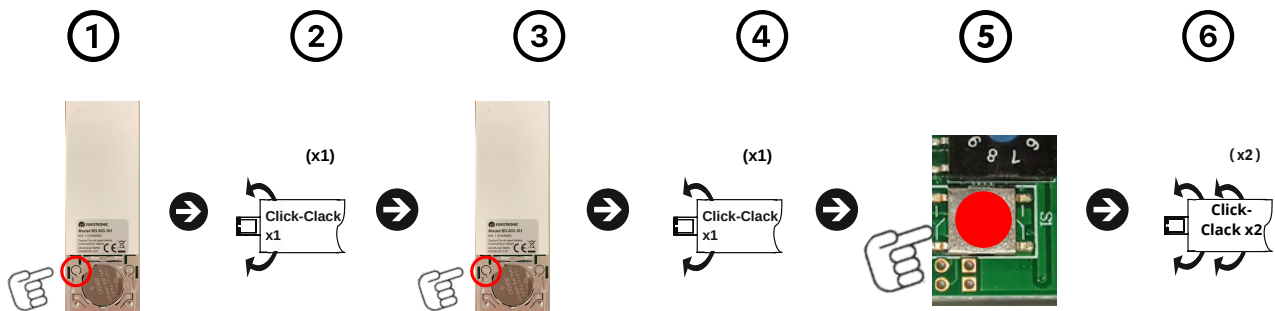
-If it beeps it is in one-way mode.

-If it beeps twice it is in bidirectional mode.

2. LINK THE KIK MOVE SENSOR WITH THE MOTOR

Make sure the motor limit switches are pre-programmed

Link to a bidirectional motor:

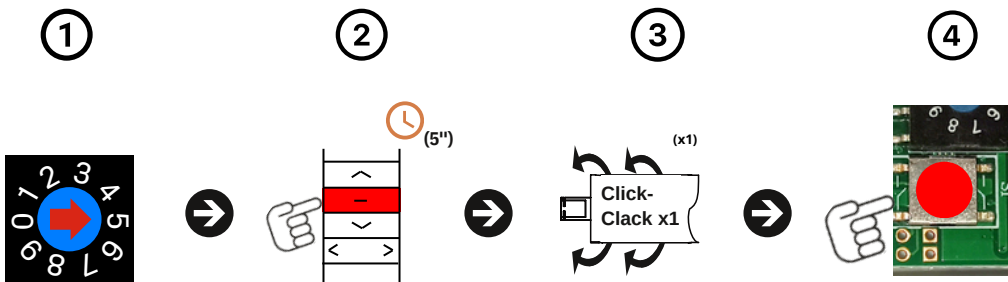


Procedure:

1. We will press the button (P2) located behind the transmitter.
2. The motor will make a "CLICK-CLACK" sound (x1) and a beep sound (x1).
3. We will press the button (P2) again.
4. The motor will make a "CLICK-CLACK" sound (x1) and a beep sound (x1).
5. We will press the programming button (PROG) of the KIK MOVE.
6. The motor will make two "CLICK-CLACK" sounds (x2) and three beeps (x3).

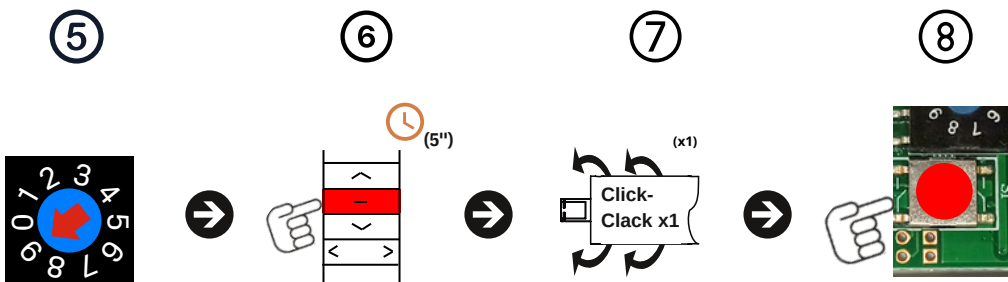
Use the same procedure to unlink the engine sensor.

Link to a unidirectional motor:



Procedure:

1. Set the (POTENTIOMETER) to position number 5.
2. Press the (STOP) button on the remote control for five seconds (5").
3. The motor will make a "CLICK-CLACK" sound (x1).
4. Press the programming button (PROG) on the KIK MOVE.



Procedure:

5. Set the (POTENTIOMETER) to position number 9.
6. Press the (STOP) button on the remote control for five seconds (5").
7. The motor will make a "CLICK-CLACK" sound (x1).
8. Press the programming button (PROG) on the KIK MOVE.

3. REGULATE SENSITIVITY TO MOVEMENT



Procedure:

- Use the (POTENTIOMETER) to adjust the sensitivity of the sensor.
- Always be sure to test to adjust the sensor sensitivity to your installation.
- We recommend a sensitivity between 7 and 9.

If you set the sensitivity to level 0 the sensor will be deactivated



www.eurotronic-europe.com

C/Pica d'Estats, 108-118 Poligono Industrial Sant Isidre
08272 Sant Fruitós de Bages (Barcelona) SPAIN

pedidos@eurotronic-europe.com Tel: +34 932 420 108